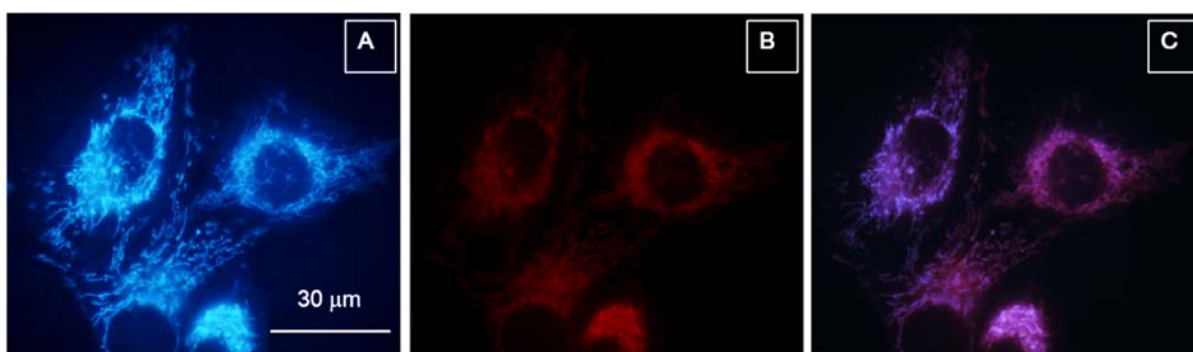


Product Specification

AIE™ Mitochondria Blue



Product Description

- This product can stain the mitochondria with blue fluorescence.
- After incubation with this product, cells can be observed under fluorescence microscope and blue signals can be obtained (Ex/Em=360/480 nm).
- This product can be co stained with yellow and red mitochondrial probes for a whole spectrum fluorescence.
- Also the product has superior photostability compared to other commercial mitochondrial stains.
(Signals can be retained after 50 scans.)

Demonstrations

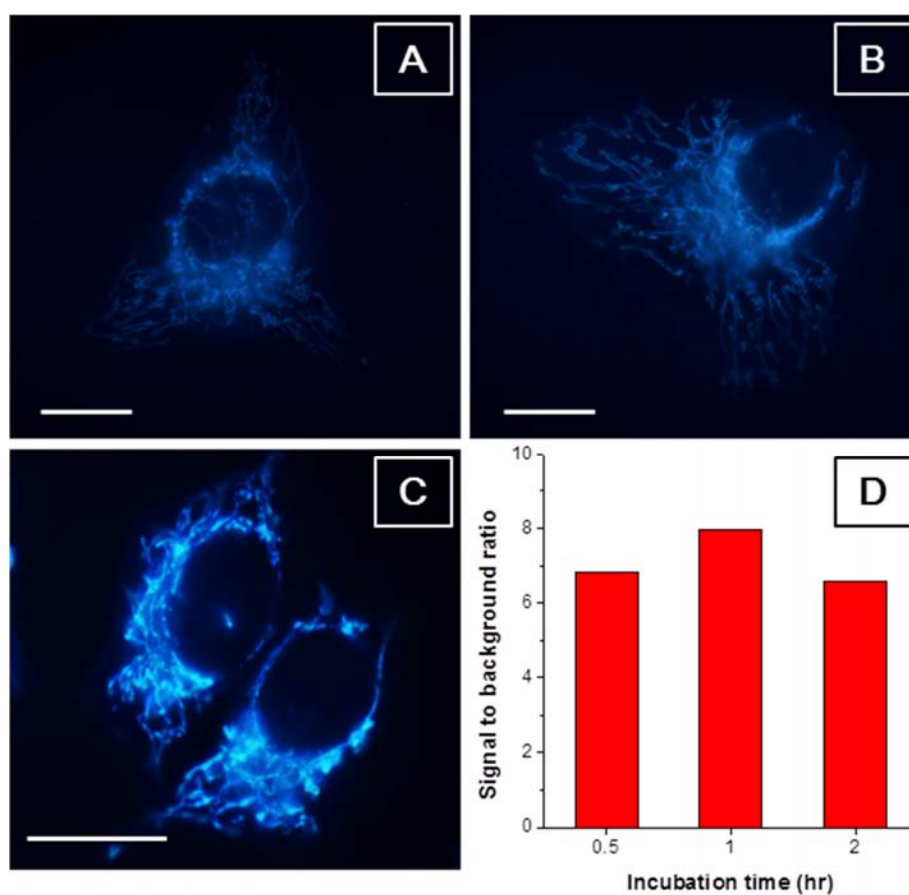


Figure 1. (A–C) Fluorescence images of the HeLa cells stained with AIE™ Mitochondria Blue for (A) 30 min, (B) 1 h and (C) 2 h. (D) Signal to background ratio of AIE™ Mitochondria Blue dyed HeLa cells with different incubation time. Concentration of AIE™ Mitochondria Blue: 5 μ M; excitation wavelength: 330–385 nm; scale bar: 15 μ M.

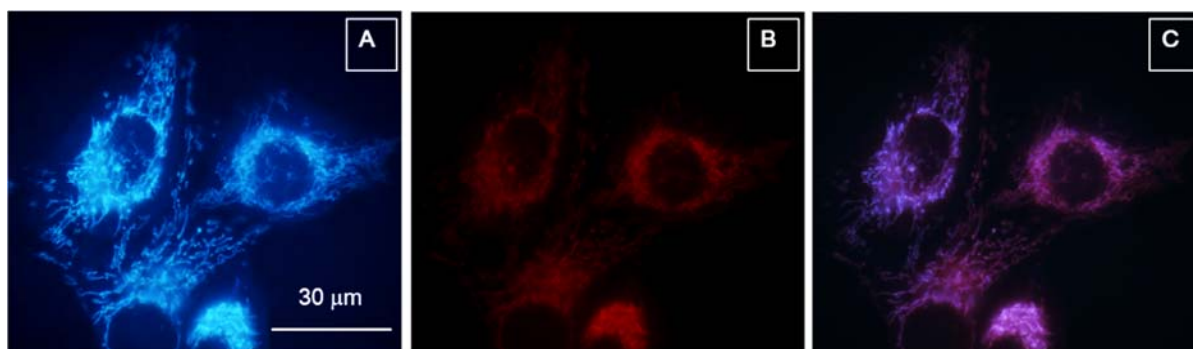


Figure 2. Fluorescence images of HeLa cells stained with (A) AIE™ Mitochondria Blue (5 μM) for 15 min and (B) Mitotracker Red FM (MT, 50 nM) for 1 h. (C) Merged images of A and B. Excitation wavelength: 330-385 nm for AIE™ Mitochondria Blue and 540-580 nm for MT.

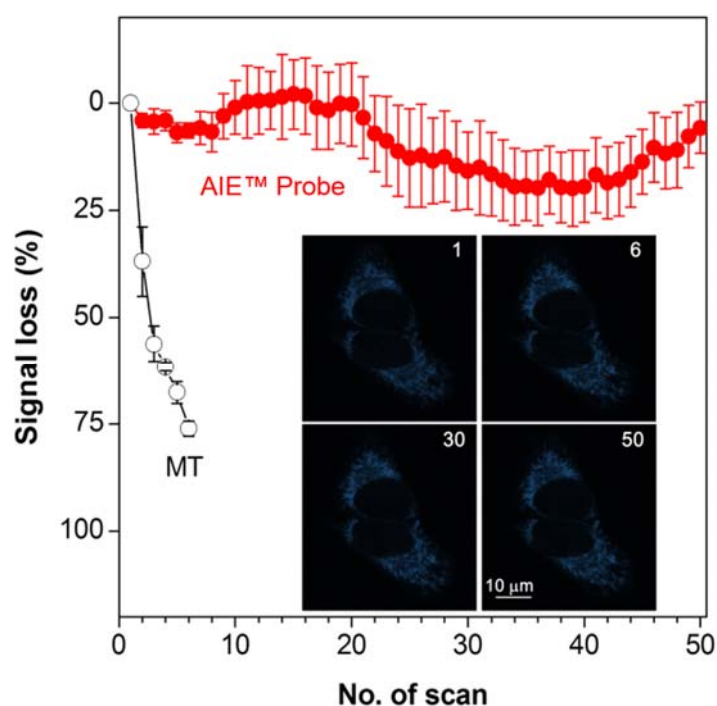


Figure 3. Fluorescence signal loss of AIE™ Mitochondria Blue (full) and MT (hollow) with increasing of number of scans. Insert: Fluorescent images of HeLa cells stained with AIE™ Mitochondria Blue (5 μM) after certain scans. Number of scan was noted on the right corner of each image. Excitation wavelength: 405 nm; emission wavelength: 449-520 nm, scanning time for each image: 7.75 s/scan.

Recommended storage condition

Store away from sunlight at 2-8 °C

Product parameters

Limited of Detection	Mitochondria staining
Color:	White
Imaging platform:	Fluorescence microscope Confocal microscope
Pack size and quantity:	10 μmol
Detection method:	Fluorescence
Excitation/Emission (nm):	360/480
Recommended transport condition:	Room temperature
Product declaration:	Only for research use.